

# 1602

Eglinton Ave W

Multiplex  
Opportunity



Strategically located in a high-growth corridor along Eglinton Avenue West, this property presents a strong multi-unit residential opportunity in one of Toronto's evolving transit-oriented areas.

The site has been thoughtfully planned to accommodate multiple units, maximizing both space efficiency and long-term income potential. With increasing demand for rental housing and ongoing infrastructure improvements in the area, this asset is well-positioned for stable cash flow and future appreciation.

Investors benefit from:

- Strong rental demand in a central location
- Proximity to transit, retail, and amenities
- Optimized unit layout for income generation
- Long-term upside driven by neighborhood growth

This is more than just a property — it's a strategic investment aligned with Toronto's shift toward higher-density living.

1602 Eglinton Ave

16 Units


- 3 Units Bachelor
- 3 Units One bedroom
- 9 Units 2 bedroom
- 1 Unit Penthouse 3 bedroom
- 1 Unit Commercial 1700 sq ft

Total area: 2200 m<sup>2</sup>

23680 Sq,feet



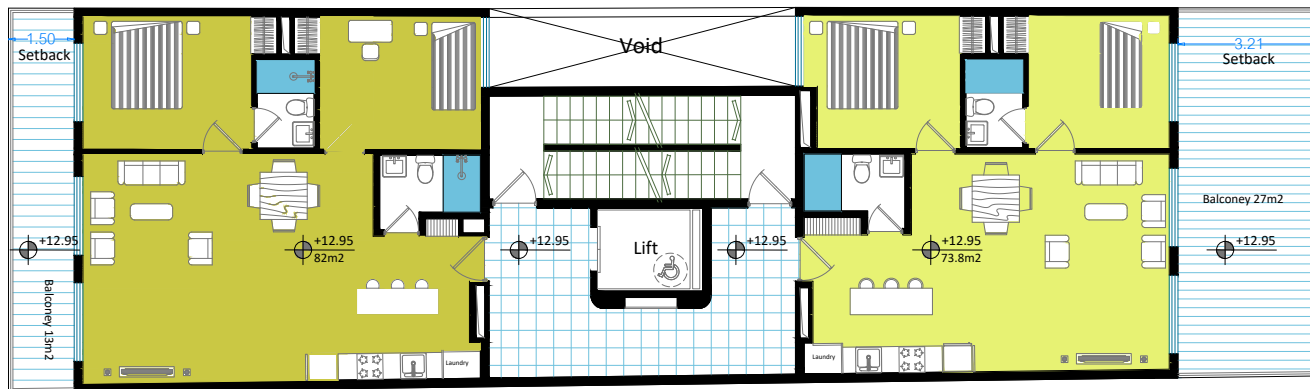


						Architect Reza Moradzadeh	Drafter	Date 5-April-2026	Scale 1/200
						Checked By	Project 1602 Eglinton, Residence		
				Site Plan		Project Location 1602 Eglinton Ave W, Toronto, ON			
						Structure System Concrete		Edition 3rd	









--	--	--	--	--



<b>rm studio</b> Architect Reza Moradzadeh Checked By	Drafter	Date	Scale
	Project	1602 Eglinton, Residence	5-April-2026
Sheet title <b>5th Floor Plan</b>	Project Location	1602 Eglinton Ave W, Toronto, ON	
	Structure System	Concrete	Edition 3rd



Rev.No	Revision note	Date	Signature	Checked



<b>rm studio</b> Architect Reza Moradzadeh Checked By	Drafter	Date	Scale
		5-April-2026	1/100
Sheet title <b>6th Floor Plan</b>	Project 1602 Eglinton, Residence		
	Project Location 1602 Eglinton Ave W, Toronto, ON		
	Structure System Concrete	Edition 3rd	Sheet 1/-



THANK  
YOU

